

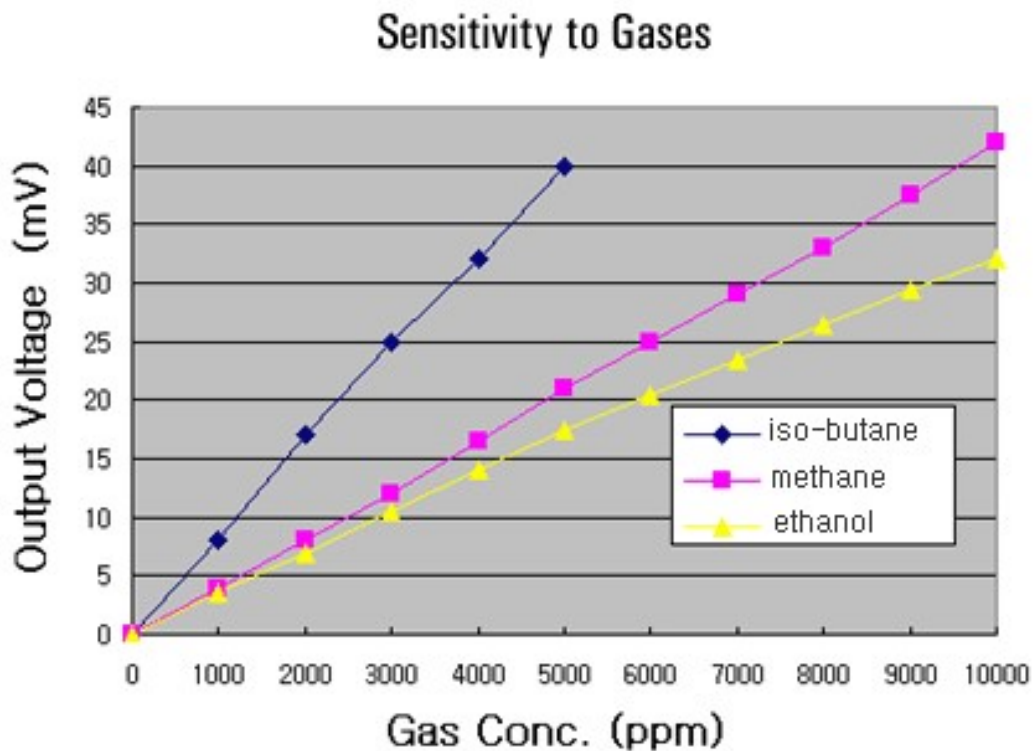
# KGS601 (Shock Resistance Type)

## Specifications

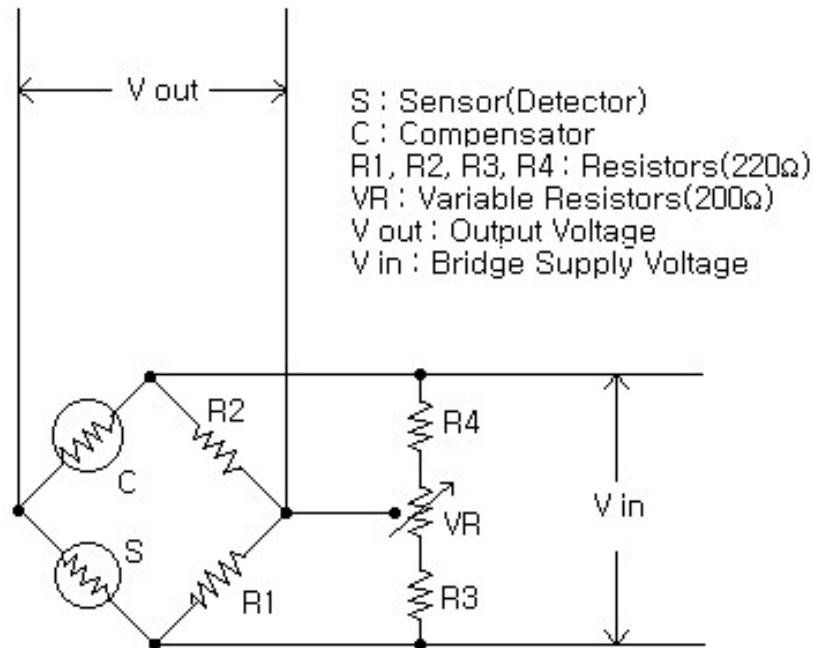


Gases Detected	Most combustible gases
Range	0 ~100% LEL
Application	- General use - High shock resistance
Operating Voltage	$2.40 \pm 0.1$ V
Current	> 180 mA
Output Sensitivity	12~16 mV / CH <sub>4</sub> 4000ppm 12~14 mV / C <sub>4</sub> H <sub>10</sub> 2000ppm
Response Time	< 10 seconds
Ambient Temp. Range	-20°C ~ 50°C
Storage Temp. Range	-30°C ~ 70°C

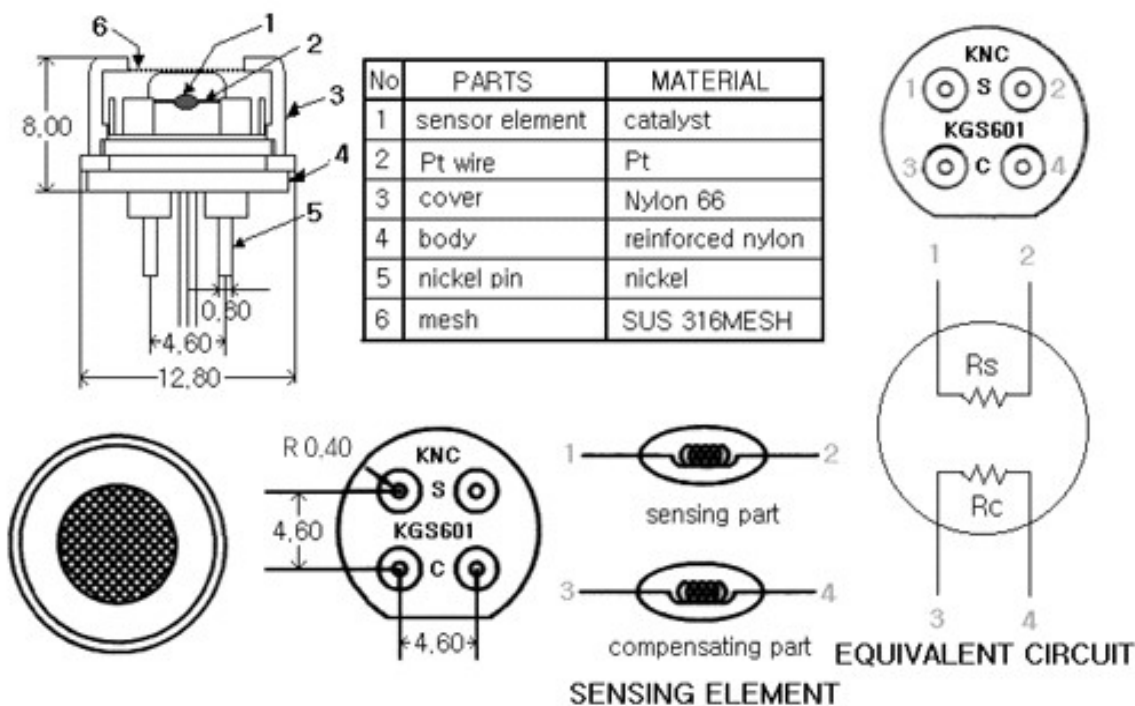
## Sensitivity Data



## Structure and Materials



## Structure and Materials



\* All dimensions in millimeters